



TRUCK BODIES

— EXPECT THE BEST —



RUGGED CONSTRUCTION

SUPERIOR DESIGN IN TRUCK BODY FABRICATION

PB9600

STANDARD PLATFORM STAKE BODIES

For your
everyday
hauling
application



OPTIONS

- Floor: apitong hardwood, tread plate
- Full rear 10" drop light apron — Includes oval stop/tail, turn, reverse, and license plate lights with wiring harness
- Cab shield (standard sizes — 18", 36", & 48")
- Triple window in bulkhead

STAKE RACKS

- 42" high 4 slat racks
- Constructed with 11 ga. reinforced hat stakes and 16 ga. roll formed slats
- Spring-loaded latch system on stakes assures secure attachment to body
- Optional rear swing out racks with bolt-on rear post



Standard Specifications

- 42" or 48" high weld-on bulkhead with screened window. Also available in 54" or 60" high
- 3/4" LED marker and clearance light kit meets [FMVSS108]. Includes wiring harness.
- Primed and painted black
- Structural channel long sills
8'6" - 14'6" • 6" x 8.2 lb. channel
16'6" - 20'6" • 7" x 9.8 lb. channel
22'6" - 26'6" • 8" x 11.5 lb channel
- 3" Structural cross members 12" o.c.
- 4" Formed 3/16" channel rear rail with inset stake pockets
- 10 ga. smooth steel or shiplapped KDAT pine floor
- 10 ga. formed side rails
- 3/16" heavy-duty exterior stake pockets with 3/8" x 2" rub rail on sides
- Standard overall width 96" (optional 102" wide)

STANDARD OVERALL LENGTH AND APPROXIMATE WEIGHT IN POUNDS*											
Length	8'6"	9'6"	10'6"	12'6"	14'6"	16'6"	18'6"	20'6"	22'6"	24'6"	26'6"
Steel Floor Weight	1161	1266	1370	1575	1782	2039	2252	2464	2751	2972	3192
Wood Floor Weight	1116	1212	1307	1496	1687	1927	2124	2319	2590	2794	2998

PB9600SD

For your heaviest hauling applications

SUPER DUTY PLATFORM STAKE BODIES



OPTIONS

- Floor: Apitong hardwood, tread plate
- Full rear 10" drop light apron — Includes oval stop/tail, turn, reverse, and license plate lights with wiring harness
- Cab shield (standard sizes 18", 36", & 48")
- Triple window in bulkhead



Shown with optional rear swing racks and full 10" light apron

STAKE RACKS

- 42" high 4 slat racks
- Constructed with 11 ga. reinforced hat stakes and 16 ga. roll formed slats
- Spring-loaded latch system on stakes assures secure attachment to body
- Optional rear swing out racks with bolt-on rear post

Standard Specifications

- 48" high weld-on bulkhead with screened window. Also available in 54", and 60" high
- 3/4" LED Marker and clearance light kit meets (FMVSS108) Includes wiring harness
- Primed and painted black
- Structural channel long sills
12'6" - 18'6" • 7" x 9.8 lb. channel
20'6" - 26'6" • 8" x 11.5 lb. channel
- 4 " Structural channel cross members 12" o.c.
- 6" Structural channel rear and side rails
- 7 ga. smooth steel floor or shiplapped KDAT pine floor
- 3/16" heavy-duty exterior stake pockets with 3/8" x 3" rub rail on sides and rear
- Standard overall width 96" [optional 102" wide]

STANDARD OVERALL LENGTH AND APPROXIMATE WEIGHT IN POUNDS*								
Length	12'6"	14'6"	16'6"	18'6"	20'6"	22'6"	24'6"	26'6"
Weight with steel floor	2262	2556	2844	3134	3510	3797	4095	4395
Weight with wood floor	1971	2210	2447	2684	2994	3241	3484	3733

CPB1000

CONTRACTOR PLATFORM BODIES

Replacement Beds for the
Light to Medium Duty
Pickup Trucks



OPTIONS:



- 5½" or 12" Liftout Sides and Rear
- Flush Mount Access Panel for Gooseneck Hitch
- Integrated Gooseneck Hitch. Only Available with Cab Chassis Option
- Smooth Steel Floor

- ⅝" or ¾" Thick Floor in Lieu of 12 Ga.

- Ladder Rack, Bolt-On or Weld-on

Custom sizes and configurations available

Standard Specifications

- 5" formed channel long sills
- 3" Formed channel 12 ga. cross members 12" o.c.
- 12 Ga. diamond plate floor with formed side rails
- 3/16" Exterior stake pockets with 1/4" x 2" tie rail on both sides & rear
- Fuel fill cutout in driver's side side rail
- 37" or 39" High tapered bulkhead with screen window and center top cutout for cab rear stop light
- LED light kit includes: 6" oval S/T/T and reverse light in rear apron and bulkhead, 3/4" rear and side marker and clearance lights, license plate light, and wiring harness. Meets (FMVSS108)
- Primed and painted black (other colors available)
- Chassis specific mounting brackets and hardware included. Ford Ram & GMC 2019 or newer

Cab Chassis

Specifications

Same as above, except:

- 4" Structural channel long sills
- No fuel fill cutout (unless requested with location specified)
- No mounting kit

Standard Length* and Width with Approximate Weight in Pounds				
Body Length	7'6"	8'10"	9'6"	**12'
84" Wide Single Wheel	890	982	1025	N/A
96" Wide Dual Wheel	959	1059	1106	1276

*Length includes bulkhead * 12' body only available in cab chassis model



Shown with optional lift out racks

CPB2000

Replacement Beds for the Light to
Medium Duty Pickup Trucks

CONTRACTOR PLATFORM BODIES



OPTIONS:



- Flush Mount Access Panel for Gooseneck Hitch
- Integrated Gooseneck Hitch. Only Available with Cab Chassis Option
- Smooth Steel Floor
- $\frac{1}{8}$ " or $\frac{3}{16}$ " Thick Floor in Lieu of 12 Ga.

- Ladder Rack, Bolt-On or Weld-on
- Square Rear Corners
- Fold Down Sides on Toolboxes

Custom sizes and configurations available

Standard Specifications

Platform Only Package

- 5" Formed channel long sills
- 3" Formed channel 12 ga. cross members 12" o.c.
- 12 Ga. diamond plate floor with formed side rails
- Recessed D-Rings on each side
- Fuel fill cutout in driver's side side rail
- Tapered rear corners for a nice streamlined appearance, and trailer clearance for gooseneck towing
- 37" or 39" High tapered bulkhead with screen window and center top cutout for cab rear stop light



- LED light kit includes: 6" oval S/T/T and reverse light in rear apron and bulkhead, 3/4" rear and side marker and clearance lights, license plate light, and wiring harness. Meets [FMVSS108]
- Primed and painted black (other colors available)
- Chassis specific mounting brackets and hardware included. Ford Ram & GMC 2019 or newer

Standard Length* and Width with Approximate Weight in Pounds				
Body Length	7'6"	8'10"	9'6"	**12'
80" Wide Single Wheel	890	982	1025	N/A
92" Wide Dual Wheel	959	1059	1106	1276

*Length includes bulkhead * 12' body only available in Ca6 chassis model

Contractor Deluxe Package

Standard Specifications

Same as platform only, PLUS:

- 2-Top mount steel toolboxes, black, 1 per side. Also available in aluminum
- Bolt-on 7 ga. x 16" high rear corner posts with chain slots
- 12 Ga. x 16" high drop down tailgate with chain adjustment and spring-loaded latches
- Filler panel between toolbox and rear post
- Primed and painted black, (other colors available)

Standard Toolbox Sizes with Approximate Weight* in Pounds				
Body Length	7'6"	8'10"	9'6"	12'
Toolbox Size	72"	84"	96"	96"
Weight, Single Wheel Width	1270	1430	1521	N/A
Weight, Dual Wheel Width	1347	1515	1610	1843

*Weight includes body

Contractor Plus Package

Standard Specifications

Same as platform only, PLUS:

- 12 Ga. x 16" high drop down sides with spring loaded latches
- Bolt-on 7 ga. x 16" high rear corner posts with chain slots
- 12 Ga. x 16" high drop down tailgate with chain adjustment and spring loaded latches

Standard Length and Width with Approximate Weight* in Pounds				
Body Length	7'6"	8'10"	9'6"	12'
80" Wide Single Wheel	1155	1267	1321	N/A
92" Wide Dual Wheel	1245	1365	1422	1645

Cab Chassis Specs

Same as above, except:

- 4" Structural channel long sills
- No fuel fill cutout (unless requested with location specified)
- No mounting kit



Shown with optional stainless steel toolbox lids



Shown with optional fold down sides

PFD8000

For Box Delete Pickup Trucks

PICKUP FLATBED DUMP BODIES



OPTIONS

- Gooseneck access panel
- Aluminum fold down side kit

Standard Specifications

- Standard Flatbed dump body includes 37" or 39" bulkhead & LED light kit
- LED light kit, includes; 6" oval S/T/T & reverse light in rear apron and bulkhead, ¾" rear and side marker and clearance lights, license plate light, & wiring harness. Meets [FMVSS108]
- 5" x 6.7 lb. structural channel long sills
- 3" formed channel 12 gauge cross members on 12 O.C.
- 12 gauge diamond plate Floor with formed side rails
- SRW Standard width 80"
- DRW Standard width 96"
- Painted black with primer undercoat & urethane top coat
- 6 recessed D-rings, 3 on each side



Optional Aluminum Contractor Sides Specs

- Constructed with ⅝" smooth aluminum
- Double wall [riveted]
- 12" high fold down sides with center T-handle latch
- 12" high fold down tailgate with chain adjustment and center T-handle latch
- Bolt-on steel corner post with chain slots

Hoist & Subframe Standard Specifications

- 100" long universal subframe designed for box delete truck with diesel, 4x4 and reg. cab with a 11,000 lb. GVW 56" CA chassis
- Body long sills sit down in angle subframe for a lower overall mounting height
- Chassis specific mounting brackets and hardware included, Ford, Dodge or GMC 2019 or newer
- Front mount telescopic cylinder with 78" stroke for a 47 degree dump angle
- Single acting 12 volt power unit installed in between subframe angles and body long sills
- Can be installed on basically any 56" CA Box Delete chassis with slight modifications to subframe & mounting brackets

Standard Length and Approximate Body Weight

Length	Width for	Approx. Wt.	**Payload Cap.
8'10"	SRW	1376	[1] 1.4 tons
8'10"	DRW	1456	[2] 2.7 tons

[1] Payload capacity is approx. and based on Ford's F350 SRW box delete truck with diesel, 4x4 and reg. cab with a 11,000 lb. GVW

[2] Payload capacity is approx. and based on Ford's F350 DRW box delete truck with diesel, 4x4 and reg. cab with a 14,000 lb. GVW

** Payload capacity represents maximum allowable weight of people & cargo and is reduced by optional equipment weight.

DB4000

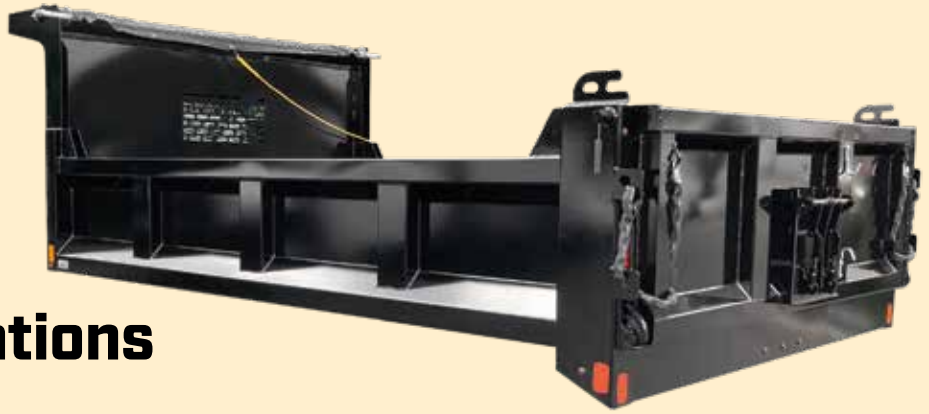
**2-6 YARD
DUMP BODIES**

MASON DUMP BODIES



OPTIONS

- 7" x 14" tailgate metering chute
- 36" or 48" cab shield
- Air release tailgate



Shown with optional manual tarp and metering chute

Standard Specifications

Body Standard Features:

- 6" x 8.2 lb. structural channel long sills
- 3" structural channel cross members 12 o.c.
- 10 ga. steel floor formed with inner side wall
- 12 ga. outer wall sides with box formed top and V-formed outside wall with two vertical braces
- 18" cab shield, with brackets for side boards (various heights available)
- Rear posts 6" higher than sides with brackets for side boards
- LED dump body light kit includes marker and clearance lights and 1 stop/turn/tail-light per rear corner post with wiring harness. Meets [FMVSS108]
- Available with 12", 16", 20" or 24" sides
- Standard width 96" outside
- Inside width 86¾"
- Primed and painted black

Tailgate Standard Features:

- Constructed with 10 ga. steel
- Fully boxed frame with two 12 ga. vertical posts
- Standard height — 6" higher than sides
- Fully double-acting with bottom release lever at driver's side, upper release is quick release screw pin style
- Standard with spreader chains and banjo eye chainholders on rear post



Screw Pin Top Release

Standard Length and Approximate Body Weight/Cubic Yards capacity*

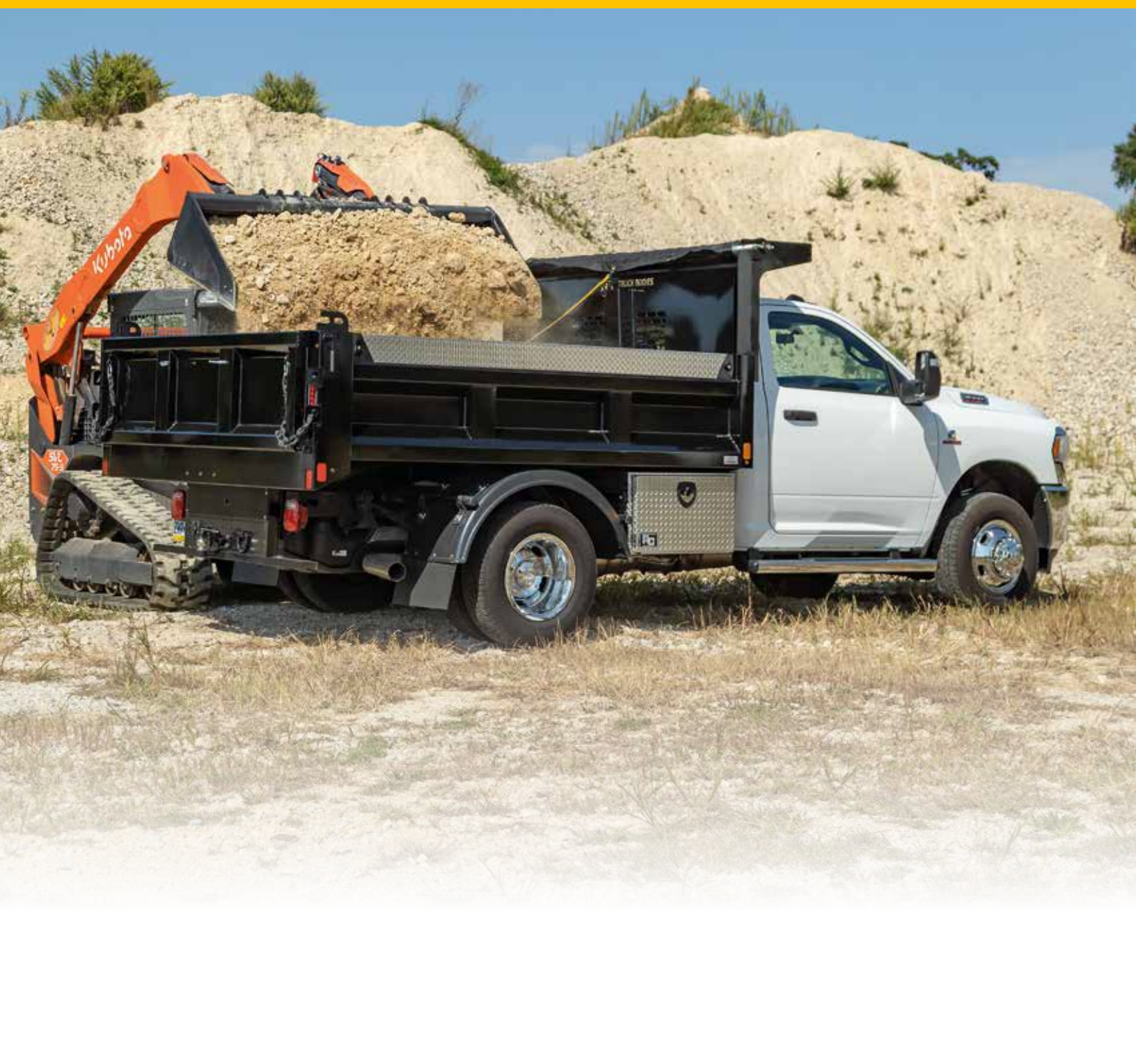
Length*	9'3"	10'6"	11'3"	12'6"
12" Sides	1765/2-3	1947/2-3	2005/3-4	2187/3-4
16" Sides	1825/3-4	2006/3-4	2076/4-5	2235/4-5
20" Sides	1922/4-5	2119/4-5	2193/5-6	2361/5-6
24" Sides	2114/5-6	2323/5-6	2398/6-7	2614/6-7

*Tailgate adds 7" to overall length

DB4000TE

**2-6 YARD
DUMP BODIES**

MASON DUMP BODIES



OPTIONS

- 7" x 14" tailgate metering chute
- 36" or 48" cab shield
- Custom sizes and configurations available
- Load tarps - manual or 12V

Standard Specifications

Body Standard Features

- 6" x 8.2 lb. structural channel long sills
- 3" structural channel cross members 12 o.c.
- 10 ga. steel floor formed with inner side wall
- 12 ga. outer wall sides with box formed top and V-formed outside wall with two vertical braces
- 18" cab shield, with brackets for side boards (various heights available)
- Rear posts 6" higher than sides with brackets for side boards
- LED dump body light kit includes marker and clearance lights and 1 stop/turn/tail-light per rear corner post with wiring harness. Meets [FMVSS108]
- Available with 12", 16" or 20" sides
- Standard width 96" outside
- Inside width 86¾"
- Primed and painted black (other colors available).

Tailgate

- Constructed with 10 ga. steel
- Fully boxed frame with two 12 ga. vertical posts
- Standard height — 6" higher than sides
- Fully double-acting with bottom release lever at driver's side, upper release is quick release screw pin style
- Standard with spreader chains and banjo eye chainholders on rear post



Telescopic Hoist Standard Features

- Universal angle subframe available for 60" and 84" CA cab chassis trucks.
- Body long sills sit down in angle subframe for a low profile mounting height.
- Front mount telescopic cylinder with 90" or 108" stroke for a 50° dump angle.
- Single acting 12 volt power unit installed between subframe angles.
- Chassis mounting and mud flap brackets included



Metering Chute

Standard Length and Approximate Body Weight/Cubic Yards capacity*		
Length*	9'6"	11'6"
12" Sides	2326/2-3	2612/3-4
16" Sides	2385/3-4	2682/4-5
20" Sides	2485/4-5	2802/5-6

*Weight includes hoist kit and tarp
 *Tailgate adds 3" to overall length

DB3000

For Box Delete Pickup Trucks

PICKUP DUMP BODIES



OPTIONS

- Bulkhead with screen window
- Fold down sides
- No tarp kit

Standard Specifications

- Standard dump body includes 12" cab shield & LED light kit
- Light kit consist of S/T/T & reverse lights 1-per side, marker & clearance lights with rubber grommets & wiring harness
- 5'X 6.7 Lb. Structural channel long sills
- 3" Formed channel 12 ga. Crossmembers on 12 O.C.
- 12 ga. steel floor formed with inner side wall
- 12 ga. outer wall sides with box formed top and v-formed outside wall
- Front and rear posts 6" higher than sides with side boards brackets
- Available in 12" sides
- SRW standard width 81" outside and 71¾" inside
- DRW standard width 96" outside and 86¾" inside
- Painted black with primer undercoat & urethane top coat (other colors available)



Aluminum Tailgate Specs

- Constructed with ¾ aluminum
- Fully boxed frame with 2 vertical braces
- Standard height 6" higher than sides
- Double acting with bottom release pin at rear both sides, upper release is quick-release screw pin style
- Standard with spreader chains and banjo eye chain holders on rear posts

Standard Length and Approximate Body Weight/Cubic Yards capacity*

Length	Width for	Side Height	Approx. Wt.	**Payload Cap.	Capacity
8'8"	SRW	12"	1650	(1) 1.3 tons	1.9 cu. ya
8'8"	DRW	12"	1750	(2) 2.5 tons	2.3 cu. yd

[1] Payload capacity is approx. and based on Ford's F350 SRW box delete truck with diesel, 4x4 and reg. cab with a 11,000 lb. GVW

[2] Payload capacity is approx. and based on Ford's F350 DRW box delete truck with diesel, 4x4 and reg. cab with a 14,000 lb. GVW

** Payload capacity represents maximum allowable weight of people & cargo and is reduced by optional equipment weight.



Hoist & Subframe Standard Specifications

- 100" long universal subframe designed for box delete 56" CA chassis
- Body long sills sit down in angle subframe for a lower overall mounting height
- Chassis specific mounting brackets and hardware included, Ford, Dodge or GMC 2019 and newer.
- Front mount telescopic cylinder with 78" stroke for a 47 degree dump angle
- Single acting 12 volt power unit installed in between subframe angles and body long sills
- Can be installed on basically any 56" CA Box Delete chassis with slight modifications to subframe & mounting brackets

DB7000

5-9 YARD DUMP BODIES

SUPER DUTY DUMP BODIES



OPTIONS

- 12³/₈" x 13¹/₂" tailgate metering chute
- 36" or 48" cab shield
- Dump hoists — electric or PTO
- Load tarps — manual or 12V
- Spreader apron
- Air release tailgate



Standard Specifications

Body Standard Features

- 7" x 9.8 lb. structural channel long sills
- 4" structural channel cross members 12 o.c.
- 7 ga. steel floor
- 7 ga. side walls with boxed tubing top rail and 10 ga. vertical braces
- 18" cab shield, with brackets for side boards [various heights available]
- Rear posts 10" higher than sides with brackets for side boards
- LED dump body light kit includes marker & clearance lights and one stop/turn/taillight per rear corner post with wiring harness. Meets [FMVSS108]
- Available with 24", 30", or 36" sides
- Standard width 96" outside
- Inside width 86¹/₂"
- Primed and painted black

Tailgate Standard Features

- Constructed with 7 ga. steel
- Fully boxed frame with two 10 ga. horizontal and two 10 ga. vertical braces
- Standard height 10" higher than sides
- Top pivot is bolt-in pin style
- Bottom has dump latch with release lever at driver's side
- Standard with spreader chains and banjo eye chain holders on rear posts

Standard Outside Length and Approximate Weight in Pounds*			
Length	10'	11'	12'
24" Sides	2805/5.33	2986/5.87	3179/6.40
30" Sides	2958/6.67	3152/7.34	3350/8.00
36" Sides	3082/8.00	3318/8.81	3528/9.61

*Tailgate adds 3" to overall length

LB3000

Heavy-Duty Dump Body for Hauling Mulch, Wood Chips, Trash, Etc.

LANDSCAPE/TRASH BODIES



OPTIONS

- Full rear 6" drop light apron, two oval stop/turn/tail lights and 1 reverse light per side plus marker, clearance and license plate lights with wiring harness
- Cab shield —
Standard sizes, 18", 36", & 48"
- Dump through 18" bottom tailgate, and top barn doors
- Rope/tarp hooks on both sides
- Super duty landscape body includes same specs as the heavy duty landscape body, except that it has a 7 ga. Floor and 3" structural channel cross members and 7 ga. Side walls



Shown with optional cab shield

Standard Specifications

- 3/4" LED marker and clearance light kit meets [FMVSS108] Includes wiring harness
- Primed and painted black, [other colors available]
- Standard width 95½" outside
- 89½" inside width
- Structural channel long sills —
7" x 9.8 lb. channel
- 3" 10 ga. formed channel cross-members 12" o.c.
- 4" channel rear rail
- 10 ga. smooth steel floor with formed side rails
- 12 ga. formed steel door with box tubing frame
- 42" or 48" high weld-on bulkhead and sides
- 10 ga. formed steel sides with box tubing top rail
- Barn door style tailgates with dual cam latch system
- 50" curbside door with dual cam latch system



Shown with tailgate/barn door combo

Standard Outside Length and Approximate Weight in Pounds*					
Length	9'6"	11'6"	12'6"	14'6"	16'6"
Weight	2015	2295	2435	2737	3025

*Rear hinge and latch system adds 2½" to overall length

*Inside length approximately 5½" less than outside

LB3000TE

Heavy-Duty Dump Body for
Hauling Mulch, Wood Chips, Trash, Etc.

LANDSCAPE/TRASH BODIES



OPTIONS

- Full rear 6" drop light apron, two oval stop/turn/tail lights and 1 reverse light per side plus marker, clearance and license plate lights with wiring harness
- Cab shield —
Standard sizes, 18", 36", & 48"
- Dump through 18" bottom tailgate, and top barn doors
- Rope/tarp hooks on both sides
- Super duty landscape body includes same specs as the heavy duty landscape body, except that it has a 7 ga. Floor and 3" structural channel cross members and 7 ga. Side walls



Shown with optional cab shield

Standard Specifications

- 3/4" LED marker and clearance light kit meets [FMVSS108] Includes wiring harness
- Primed and painted black, [other colors available]
- Standard width 95½" outside
- 89½" inside width
- Structural channel long sills —
7" x 9.8 lb. channel
- 3" 10 ga. formed channel cross-members 12" o.c.
- 4" channel rear rail
- 10 ga. smooth steel floor with formed side rails
- 12 ga. formed steel door with box tubing frame
- 42" or 48" high weld-on bulkhead and sides
- 10 ga. formed steel sides with box tubing top rail
- Barn door style tailgates with dual cam latch system
- 50" curbside door with dual cam latch system



Shown with tailgate/barn door combo

Telescopic Hoist Standard Features

- Universal angle subframe available for 60" and 84" CA cab chassis trucks.
- Body long sills sit down in angle subframe for a low profile mounting height.
- Front mount telescopic cylinder with 90" or 108" stroke for a 50° dump angle.
- Single acting 12 volt power unit installed between subframe angles.
- Chassis mounting and mud flap brackets included

Standard Outside Length and Approximate Weight in Pounds*					
Length	9'6"	11'6"	12'6"	14'6"	16'6"
Weight	2015	2295	2435	2737	3025

*Rear hinge and latch system adds 2½" to overall length

*Inside length approximately 5½" less than outside

CB3000

Heavy-Duty Dump Body for
Hauling Wood Chips, Forestry Cleanup

CHIPPER/FORESTRY BODIES



OPTIONS

- Front cutout for B-pack toolbox overhang, not available with 9'6" body
- Ladder rack, bolt-on three-piece with ladder roller on curbside
- Ladder with two rung flip down section, bolt on for 66" high body
- Ladder storage compartment with shelf for pruners on curbside, with sloped top



Standard Specifications

- Body includes 66" or 72" high sides including tapered roof top with vents in side wall
- 30" high rear barn doors with dual cam latch system
- LED light kit, includes; 6" oval S/T/T and reverse lights in rear apron and roof channel, 3/4" rear and side marker and clearance lights, & wiring harness, meets [FMVSS108]
- Structural channel long sills; 7" x 9.8 lb. channel
- 3" 10 ga. formed channel crossmembers 12' O.C.
- 4" channel rear rail
- 10 ga. smooth steel floor with formed side rails
- 10 ga. smooth steel sides with box tubing top rail
- 14 ga. formed steel roof
- 95½" standard outside width with 89½" inside width
- Painted white with primer undercoat & urethane top coat
- Black interior rubberized chip protection coating, floor, sides & top

Cubic Yard Capacity		
Overall Outside Dimensions, length x width	Approx. weight	Cubic Yards
96" x 9'6" x 66" high	2880	13
96" x 12' x 66" high	3175	17
96" x 14' x 72" high	3492	22
96" x 16' x 72" high	3871	25

ADB4000

APPALACHIAN DUMP BODIES



OPTIONS

- Custom sizes and configurations available
- Treated pine wood side boards
- Steel tailgate



Shown with optional manual tarp and wood sides

Standard Specifications

- 6" x 8.2 lb. structural channel long sills
- 3" structural channel cross members 12 o.c.
- 7 ga. steel floor formed with inner side wall
- 12 ga. outer wall sides with box formed top and V-formed outside wall with two vertical braces
- 36" cab shield, with brackets for side boards (various heights available)
- Rear posts 6" higher than sides with tall rear board pockets notched into rear post and 2" lower than cab shield.
- LED dump body light kit includes marker and clearance lights and 1 stop/turn/tail/reverse light per rear corner post with wiring harness. Meets (FMVSS108)
- Available with 12", 16" or 20" sides
- Standard width 96" outside
- Inside width 86¾"
- Primed and painted black

Cubic Yard Capacity		
Length*	9'3"	11'3"
12" Sides	1954	2207
16" Sides	1999	2289
20" Sides	2099	2411
96" x 16' x 72" high	3871	25

*Tailgate adds 3" to overall length

Aluminum Tailgate Standard Features

- Constructed with ¾" aluminum
- Fully boxed frame with two vertical posts
- Standard height — 6" higher than sides
- Fully double-acting with bottom release lever at driver's side, upper release is quick release screw pin style
- Standard with spreader chains and banjo eye chainholders on rear post



G A L L E R Y



CUSTOM TRUCK BODIES



THIS BODY FEATURES CUSTOM:

- Back pack toolbox with built on cab shield
- Dump body style tailgate
- Solid wood stake racks
- Tarp shield



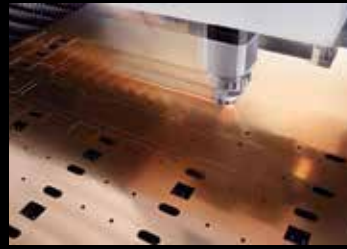
- Custom top-mounted tool boxes
- Ladder rack
- Broom & shovel storage pockets
- Spare tire holder
- Lift out tailgate



- Beavertail with fold down ramp
- Fold down sides
- Expanded metal bulkhead with lockable toolbox



- Custom liftout side posts with board pockets
- Steel floor overlay on wood
- Winch track with winches and straps



CUTTING EDGE EQUIPMENT TO CREATE CUTTING EGDE PRODUCTS



WE KEEP OUR EQUIPMENT UP TO DATE

BRINGING YOU THE BEST FINISH

SHORTER LEAD TIMES

BETTER PRODUCTS



TRUCK BODIES
— EXPECT THE BEST —

AT SH TRUCK BODIES

we do not think giving our customer what he wants is asking too much.

WE OFFER:

- Custom sizes, options & configurations
- Shorter than the standard industry lead times.
- Full delivery service
- Some common standard bodies in stock
- State-of-the-art paint facility capable of custom colors



TRUCK BODIES
— EXPECT THE BEST —

16 Westbrook Drive
Honey Brook, PA 19344

PHONE

610.273.0157

FAX

610.273.3169

www.shtruckbodies.com

A DIVISION OF  **SWAMPY HOLLOW**
MANUFACTURING